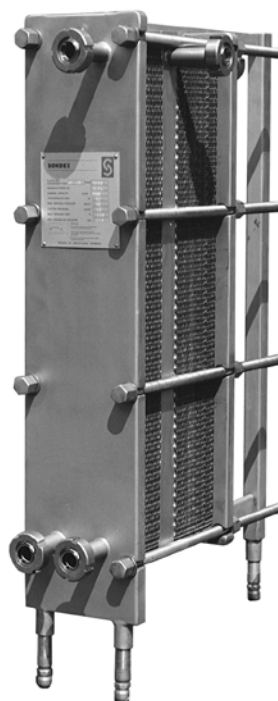




SONDEX

S4A + S8A

Plate Heat Exchanger



Recommended Applications:

The **S4A & S8A** range of **Sondex** plate heat exchangers is specially designed for the HVAC area, heat recovery, the food, industrial and chemical market.

Design Principle:

The **Sondex** type **S4A and S8A** plate range with lengths up to 0.75 m and a "long" thermal pattern will cover many duties up to 8 m³/h in a single pass solution, meaning that all the connections are on the head side. This will ensure easy pipe- and service work, and by dismantling the exchanger for service, no pipes need to be removed.

The heat transfer is obtained, when the warm medium transfers energy through the thin, strong flow plates between the channels and delivers it to the cold opposing medium without mixing the two media.

Counter-current flow creates the optimal efficiency.

The plate- and inlet design allows effective, easy CIP (Cleaning in Place) of all "flow" surfaces.

Flow plates:

The corrugated "herringbone" pattern ensures turbulent flow in the whole effective area. Furthermore, this pattern brings "metallic" contact between the plates, and together with locking devices on the gaskets, the plate pack is easily assembled.

The plate pack is held firm and safely between the fixed head and movable follower of the frame.

Data Required for Correct Quotation:

Duty, flow rate, type of media, temperatures, working pressure/temperature, pressure losses and thermodynamic properties determine the exchanger type, size of heat surface and plate pattern.

Technical Information

Frame:

Painted frame and stainless steel frame, with the clamping bolts placed around the frame edge. Standard colour by painted frame: Blue RAL 5010. Available in other colours.

Working pressure:

The frames are designed for a working pressure of MPa/1.0/1.6 MPa.

Intermediate Frames:

Intermediate frames and corner blocks for IS and FS frames in stainless steel.

Construction Standard:

According to PED 97/23/EC: A-D "Merkblätter"
According to ASME CODE: ASME VIII, DIV. 1

Connections:

1 1/4" pipe or threaded pipe ISO7 BSP/ NPT in stainless steel or titanium. 1"/DN25 dairy pipe or union. According to all known standards.

Plates:

Standard material: AISI 316 and titanium. Also 2 x 0.4 mm "Sonder Safe" plates, for food and industry. Not standard: 254 SMO, hastelloy C 276 and other pressable materials.

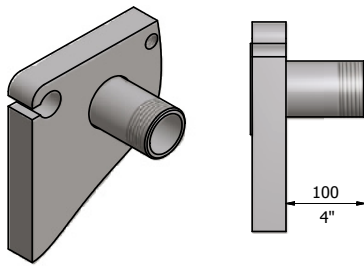
Gaskets:

The gasket is the unique "hang-on", non-glued type. Standard material: Nitrile, EPDM and Viton.

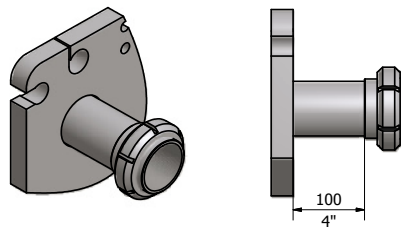
Extra Equipment:

Safety cover in stainless steel. Insulating jacket. Assembling spanner. Foundation feet for the IS frame.

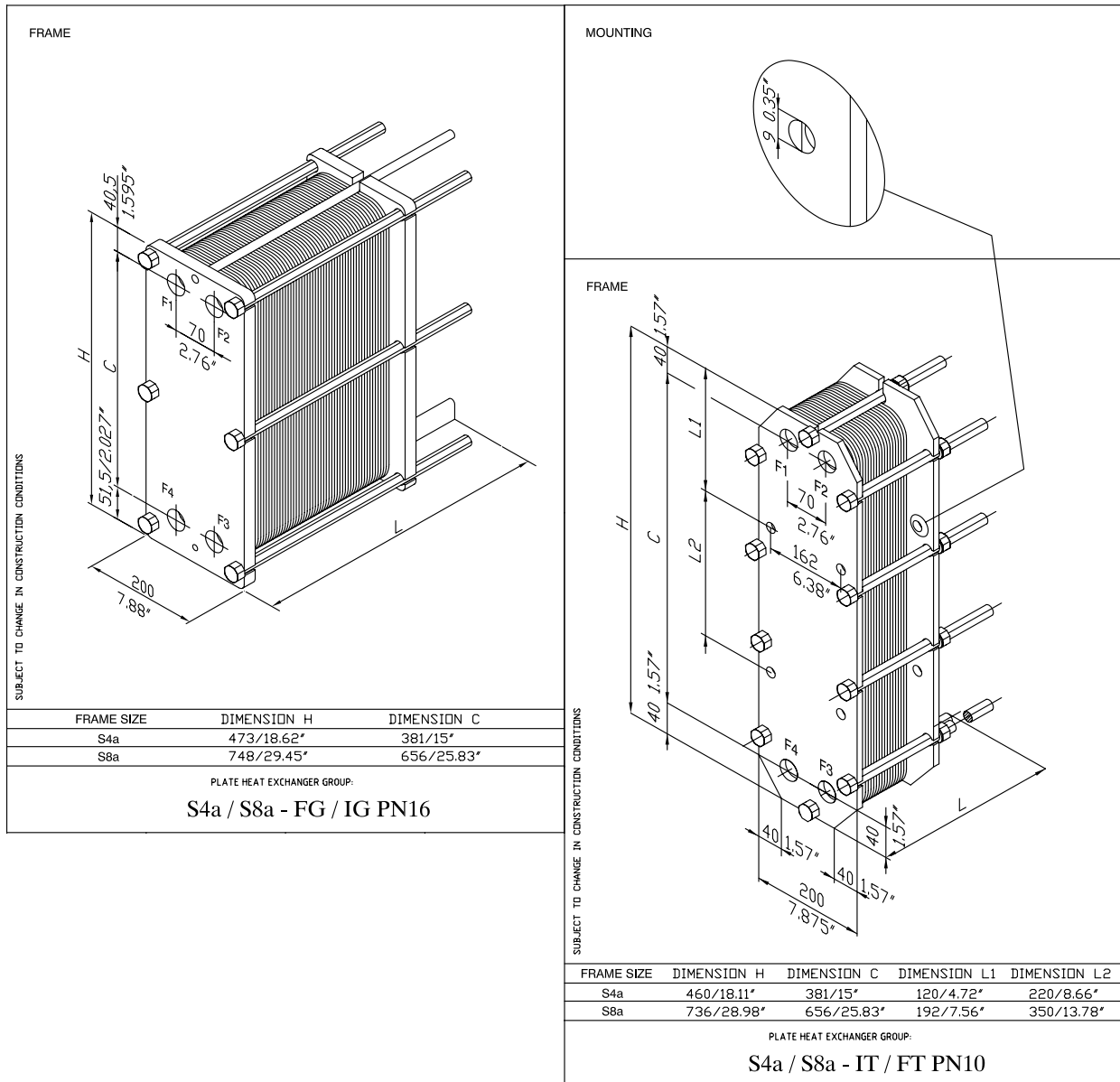
CONNECTIONS:



THREADED PIPE



DAIRY UNION

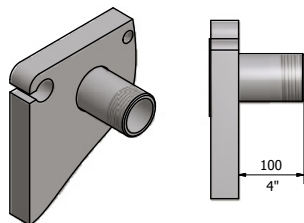


SONDEX A/S · JERNET 9 · DK-6000 KOLDING · DENMARK

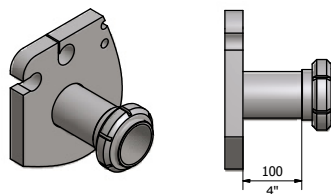
SONDEX

Phone +45 76 30 61 00 • Telefax +45 75 53 89 68 / +45 75 50 50 19 • E-mail: info@sondex.dk

CONNECTIONS:

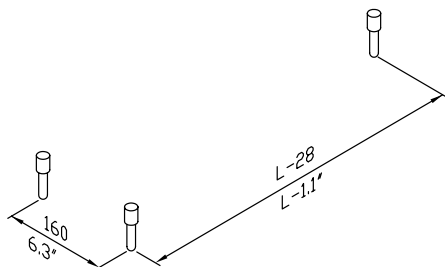


THREADED PIPE

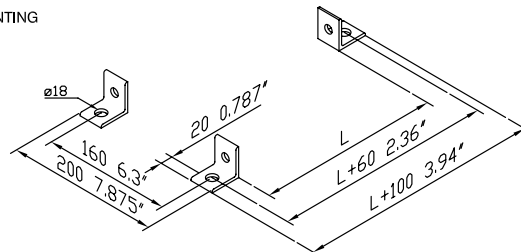


DAIRY UNION

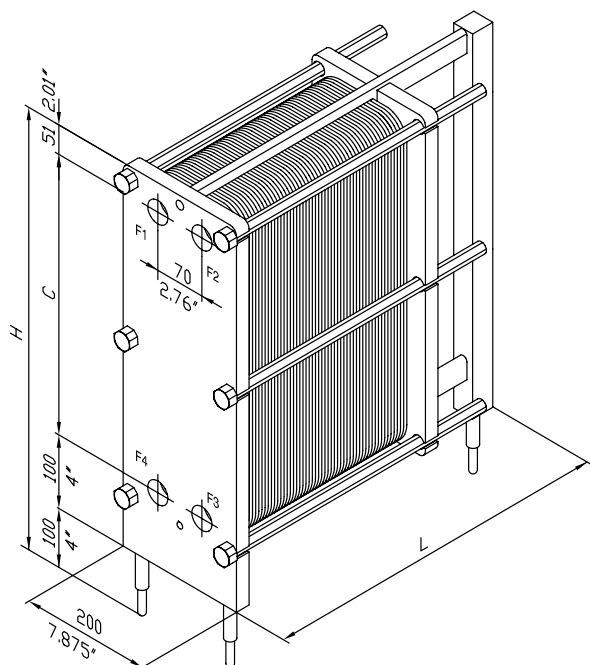
MOUNTING



MOUNTING

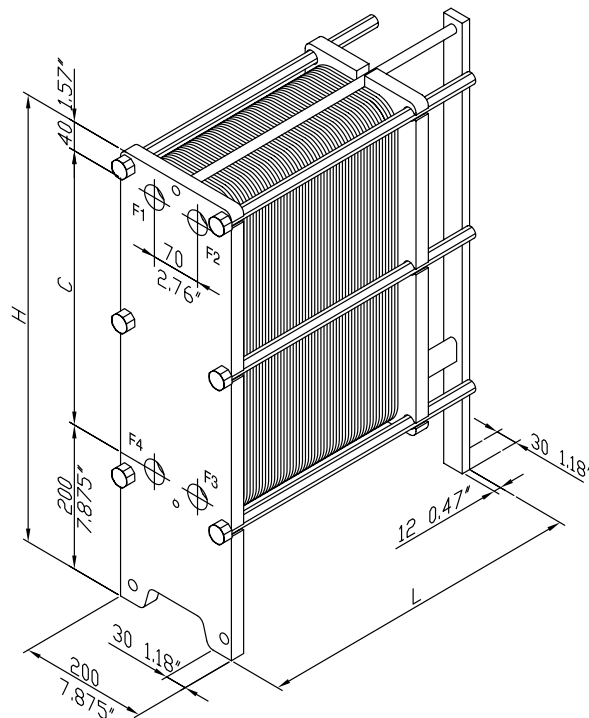


FRAME



SUBJECT TO CHANGE IN CONSTRUCTION CONDITIONS

FRAME



SUBJECT TO CHANGE IN CONSTRUCTION CONDITIONS

FRAME SIZE	DIMENSION H	DIMENSION C
S4a	632/24.88"	381/15"
S8a	907/35.71"	656/25.83"

PLATE HEAT EXCHANGER GROUP:

S4a / S8a - FS PN16

FRAME SIZE	DIMENSION H	DIMENSION C
S4a	621/24.45"	381/15"
S8a	896/35.28"	656/25.83"

PLATE HEAT EXCHANGER GROUP:

S4a / S8a - IS PN16-25



SONDEX A/S · JERNET 9 · DK-6000 KOLDING · DENMARK

SONDEX

Phone +45 76 30 61 00 • Telefax +45 75 53 89 68 / +45 75 50 50 19 • E-mail: info@sondex.dk