

Installation (ship): Recon Big-End B2 45 Engine type: Wichmann AXA Engine No: _____
 Engine running hours: _____

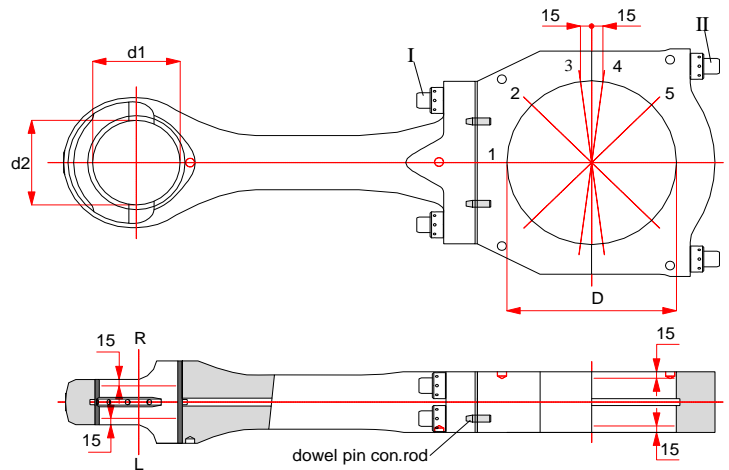
Big end bearing bore

Big end nuts and conrod must be tightened before measuring.

Drawing No. or part No.: _____
 Component running hours before measurement: _____

Nominal diameter without shells: (D)= 228 H6 mm (+0,032 – 0)mm
 Allowed minimum diameter: 227,90 mm
 Maximum allowed difference between D_{max} and D_{min}: 0.10 mm
 Reference diameter (mm): _____

Component running hours before measurement: _____



Bank		Cylinder number								
		1	B2	3	4	5	6	7	8	9
Big end bearing bore D1 to D5 (deviation in 1/100 mm)										
D1	L		227,95							
	R		227,96							
D2	L		227,96							
	R		227,99							
D3	L		228,00							
	R		228,00							
D4	L		228,01							
	R		228,01							
D5	L		227,99							
	R		228,00							
Max. deviation			0,06							
Remarks/Manufact. No.			45							
<i>(Stamped on Conrod)</i>										
Gudgeon pin bearing bush mounted										
d1	L									
	R									
d2	L									
	R									
Remarks/Manufact. No										

Date of measurement: 1/9-14 Place: Frederikshavn Name: Jesper M / Michael C