

Installation (ship): Recon Use: _____ Project no.: 15956
 Engine type: W20 Engine no.: 11101 NO1 Engine running hours: _____

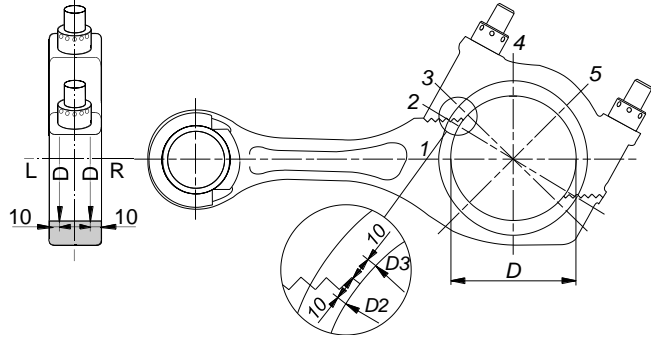
Connecting rod – Wärtsilä 20

Big end bearing bore

Connecting rod screws must be tightened before measuring.
 Hydraulic pressure when tightening M30 screws: 550 bar.

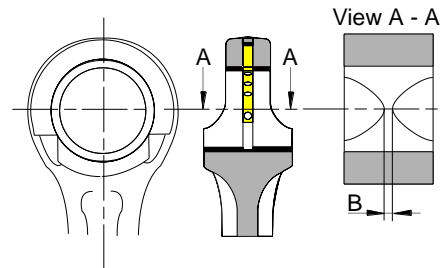
Nominal diameter without shells: $(D) = 190 \left(\begin{matrix} +0.029 \\ 0.000 \end{matrix} \right) \text{ mm}$
 Maximum allowed difference between D_{max} and D_{min} : 0.12 mm

Reference diameter (mm): 190



Gudgeon pin bearing bush mounted

Wear limit B = 0 for bronze lining. Wear pattern shown in view A-A.



Bank		Cylinder number								
		1	2	3	4	5	6	7	8	9
Big end bearing bore										
D1	L	190,02								
	R	190,02								
D2	L	190,02								
	R	190,03								
D3	L	190,02								
	R	190,01								
D4	L	190,02								
	R	190,02								
D5	L	190,02								
	R	190,02								
Max. deviation		0,02								
Remarks / Manufact. no.		38762								
Gudgeon pin bearing bush mounted										
Measurement (B) mm										
Remarks / Manufacturer no.										

Measuring Tool Number: M702-M567

Date of measurement: 17/9-14 Place: Fr-Havn

Name: Niklas Lyng